



INSTRUCTION BULLETIN

No. 340371
Machine: 6200 / 6200E
Published: 05-2018
Rev: 02

NOTE: DO NOT DISCARD the Parts List from the Instruction Bulletin. Place the Parts List in the appropriate place in the machine manual for future reference. Retaining the Parts List will make it easier to reorder individual parts and will save the cost of ordering an entire kit.

NOTE: Numbers in parenthesis () are reference numbers for parts listed in Bill of Materials.

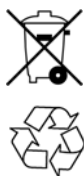
Installation instructions for kit numbers 383680 and 383681

SYNOPSIS:

This kit contains the parts needed to install 12V and 36V actuators on 6200 / 6200E sweepers.
Please follow step-by-step instructions.

SPECIAL TOOLS / CONSIDERATIONS: NONE

(Estimated time to complete: 1 hour)



PROTECT THE ENVIRONMENT

Please dispose of packaging materials, old machine components, and hazardous fluids in an environmentally safe manner according to local waste disposal regulations.

Always remember to recycle.

PREPARATION:

1. Park the machine on a clean level surface.
2. Turn off the machine, remove the key, and the set parking break.

FOR SAFETY: Before leaving or servicing machine, stop on level surface, turn off machine, and remove key.

3. Disconnect battery cables from machine.

 **WARNING: Always disconnect battery cables from machine before working on electrical components.**

4. Remove hopper filter cover.

INSTALLATION:

1. Disconnect the wire harness from the existing actuator.
2. Remove the actuator from the machine. Set the clevis and cotter pins aside. Discard the removed actuator.

NOTE: Do Not remove the red retainer clip from the new actuator (1). The red retainer clip is removed later after the actuator is installed onto the machine. The red retainer clip holds the actuator to the correct factory set adjustment.

3. Use the clevis and cotter pins to install the new actuator (1) onto the machine. Be sure the newly installed actuator is in the same position as the removed actuator. (Fig. 1)

NOTE: Be sure hopper door is open before connecting the actuator cylinder screw to the dump door shaft.

4. Connect the main wire harness to the new actuator (1).
5. Remove the red retainer clip from the actuator (1). Discard the red retainer clip.
6. Reconnect the battery cables to the batteries.
7. Start and test the machine. Raise and lower the hopper to ensure the newly installed actuator (1) functions properly and the hopper completely raises and lowers.

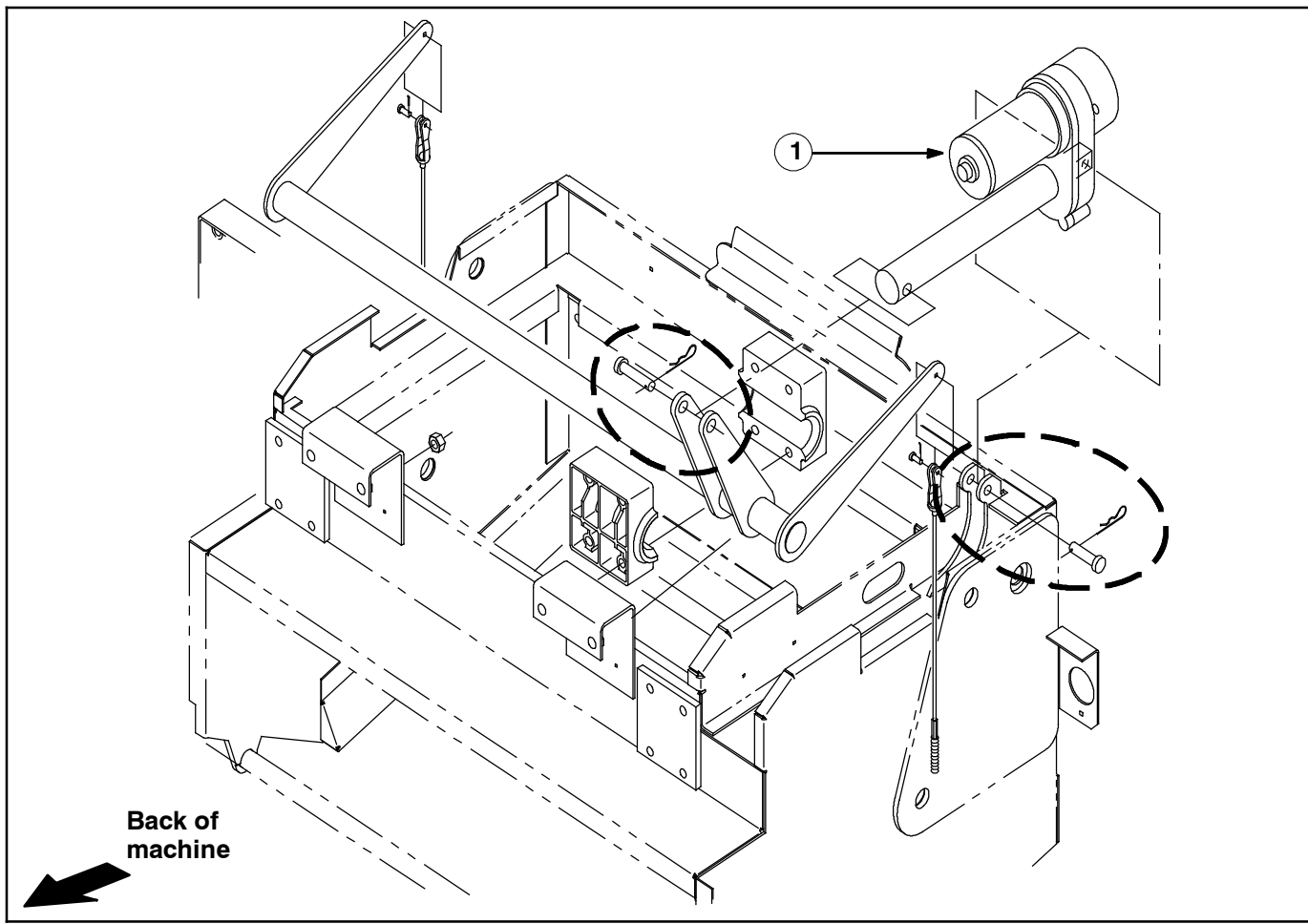


FIG. 1 - New Actuator Kit Installation

Bill Of Materials For 36v Actuator Kit 383680

Ref.	TENNANT Part No.	Description	Qty.
1	383828	Actuator, 36V	1

Bill Of Materials For 12v Actuator Kit 383681

Ref.	TENNANT Part No.	Description	Qty.
1	383830	Actuator, 12V	1

TENNANT COMPANY
P. O. Box 1452
Minneapolis, MN 55440-1452